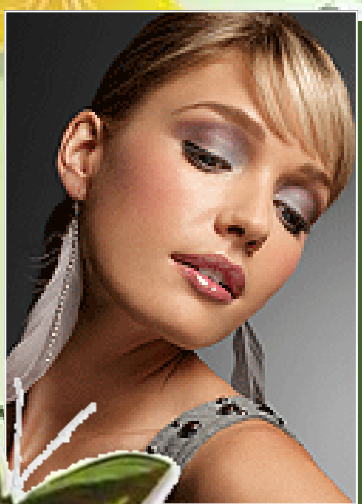


Color LOOKS for Spring 2010





Before

3 X 5
VERTICAL PHOTOS
WORK BEST



After

3 X 5
VERTICAL PHOTOS
WORK BEST

Naturally Neutral



A fresh, glowing complexion is the center of this simple, must-have look.



GET THIS LOOK

Includes:

- Hazelnut Mineral Eye Color
- Sparkling Cider Mineral Cheek Color
- Neutral Lip Liner
- Tanned Crème Lipstick
- Black Waterproof Mascara

MODEL NAME _____

OCCUPATION _____

PHONE _____ Home

_____ Work

_____ Cell

BEST TIME TO CALL _____

Email _____

HAIR COLOR _____

EYE COLOR _____

SKIN TYPE: combination ~ oily ~ dry

MY FAVORITE MARY KAY PRODUCTS



Berry-Stained Lips



This look features lips drenched in a bright berry shade.



GET THIS LOOK

Includes:

- Pink Stardust Mineral Highlighting Powder
- Cherry Blossom Mineral Cheek Color
- Berry Kiss Crème Lipstick
- Black Lash Lengthening Mascara

MODEL NAME _____

OCCUPATION _____

PHONE _____ Home
 _____ Work
 _____ Cell

BEST TIME TO CALL _____

Email _____

HAIR COLOR _____

EYE COLOR _____

SKIN TYPE: combination ~ oily ~ dry

MY FAVORITE MARY KAY PRODUCTS



Tropical Jewels



Jewel-toned eyes complement saturated lips in this exotic nod to the on-trend look.



EYES: Moonstone Mineral Eye Color
 Denim Frost Mineral Eye Color
 Espresso Mineral Eye Color
 Black Eyeliner
 Black Ultimate Mascara

CHEEK: Cherry Blossom Mineral Cheek Color

LIPS: Plum Lip Liner
 Rich Fig Crème Lipstick
 Bronze Bliss Lip Gloss

MODEL NAME _____

OCCUPATION _____

PHONE _____ Home

_____ Work

_____ Cell

BEST TIME TO CALL _____

Email _____

HAIR COLOR _____

EYE COLOR _____

SKIN TYPE: combination ~ oily ~ dry

MY FAVORITE MARY KAY PRODUCTS



Feminine in Floral



All eyes will be on you with this hot tropics look.



EYES: Steel Mineral Eye Color
 Granite Mineral Eye Color
 Sweet Plum Mineral Eye Color
 Steely Eyeliner
 Black Ultimate Mascara

CHEEK: Pink Petals Mineral Cheek Color

LIPS: Neutral Lip Liner
 Sheer Blush Crème Lipstick
 Sugarberry Lip Gloss

MODEL NAME _____

OCCUPATION _____

PHONE _____ Home

_____ Work

_____ Cell

BEST TIME TO CALL _____

Email _____

HAIR COLOR _____

EYE COLOR _____

SKIN TYPE: combination ~ oily ~ dry

MY FAVORITE MARY KAY PRODUCTS

CREATE AMAZING EYES



MARY KAY EYE BUNDLES
GREENS ~ **BROWNS** ~ **BLUES** ~ **HAZELS**

GREEN EYES



Gorgeous Green Bundle
Moonstone Mineral Eye Color
Sienna Mineral Eye Color
Sweet Plum Mineral Eye Color
Ultimate Mascara



BROWN EYES



Beautiful Brown Bundle
Silky Caramel Mineral Eye Color
Sienna Mineral Eye Color
Navy Blue Mineral Eye Color
Ultimate Mascara



BLUE EYES



Brilliant Blue Bundle
Spun Silk Mineral Eye Color
Hazelnut Mineral Eye Color
Chocolate Kiss Mineral Eye Color
Ultimate Mascara



HAZEL EYES



Hypnotic Hazel Bundle
Sweet Pink Mineral Eye Color
Hazelnut Mineral Eye Color
Cinnabar Mineral Eye Color
Ultimate Mascara

