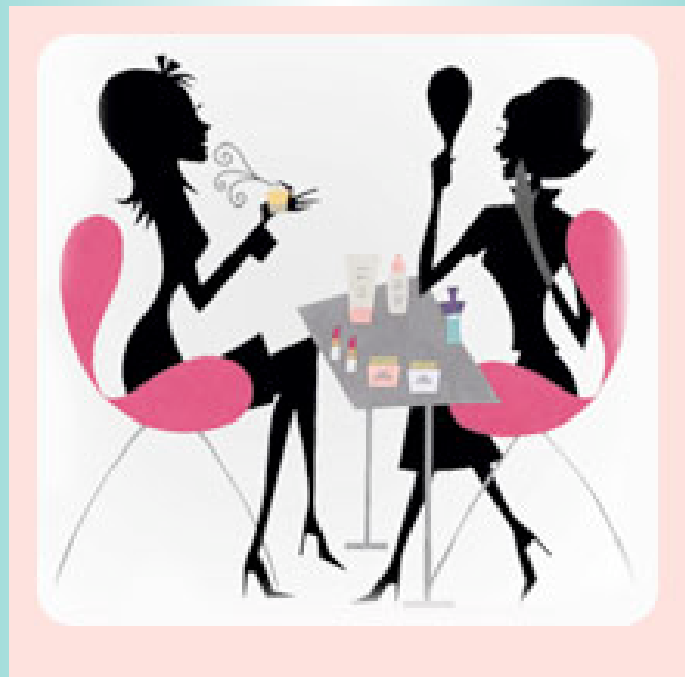


Makeup Artist Looks

11 Colorful Ideas

Model Portfolio



Before

3" X 5" works best

After

3" X 5" works best

Beautifully Blended

An easy trick for an explosive look is blending industrial shades of metallic gray and black with a warm and creamy neutral shade.

1. Create an almost smoky effect by washing the entire eyelid in Mary Kay® Mineral Eye Color in Steel.
2. Apply Black eyeliner to upper and lower lashline. Then, using the Eyeliner/Eyebrow Brush from the Mary Kay® Brush Collection, trace over eyeliner using mineral eye color in Coal.
3. To add some warmth, add Spun Silk mineral eye color along the brow bone and inner eye.
4. Next, create a glowing cheek with Sunny Spice mineral cheek color.
5. Apply Mary Kay® Ultimate Mascara™ in Black to top and bottom lashes.
6. Line the lips in Coral lip liner, then apply lipstick in Pink Shimmer and lip gloss in Sugarberry.

MODEL NAME _____

OCCUPATION _____

PHONE _____ HOME
_____ WORK
_____ CELL

BEST TIME TO CALL _____

Email _____

HAIR COLOR _____

EYE COLOR _____

SKIN TYPE: combination - oily - dry

Before

3" X 5" works best

After

3" X 5" works best

Brilliant Beauty

Say "hello" to effortless beauty that captivates. Using three eye color shades doesn't have to be complicated. Just follow these steps.

1. Simply wash the entire eyelid in Honey Spice mineral eye color, from lashline to brow bone.
2. Sweep Amber Blaze mineral eye color from lashline to eye crease.
3. Then apply Cinnabar mineral eye color just along the upper and lower lash line with the Eyeliner/Eyebrow Brush from the Mary Kay® Brush Collection. (You can apply it over Black eyeliner for maximum eye definition or wear it alone for more subtle allure.)
4. Apply one or two coats of Mary Kay® Ultimate Mascara™ on top and bottom lashes.
5. Sweep on Bold Berry mineral cheek color just to the apples of your cheeks for a natural glow.
6. Glide on some Mary Kay® Tinted Lip Balm Sunscreen SPF 15* in Apricot.
7. You can add a subtle shimmer to eyes by applying a light, sparkling color, like Mary Kay® Mineral Eye Color in Crystalline, on top of your finished look.
8. For a twist on smoky eyes, experiment with colors other than black. For this look, try blending Cinnabar mineral eye color from lashline to eye

MODEL NAME _____

OCCUPATION _____

PHONE _____ HOME
_____ WORK
_____ CELL

BEST TIME TO CALL _____

Email _____

HAIR COLOR _____

EYE COLOR _____

SKIN TYPE: combination - oily - dry

Before

3" X 5" works best

After

3" X 5" works best

Colorfully Sheer

Create a beautifully sheer and simple look that's all about dewy skin and pastel-perfect eyes with just five products.

1. Start off your luminous look with Mary Kay® Tinted Moisturizer With Sunscreen SPF 20* to even out your complexion.
2. Then sweep Dusty Lilac mineral eye color across entire eyelid, applying more color at the lashline and blending up toward the brow bone. This creates depth without looking overdone.
3. Next apply Navy eyeliner along upper and lower lashline.
4. Finish off eyes with long-lasting Mary Kay® Waterproof Mascara in Black on upper and lower lashes.
5. Add a bit of shimmer with Mary Kay® NouriShine® Lip Gloss in Sugarberry.
6. For smoother application, "warm up" your Mary Kay® Eyeliner by clasping it between your hands and rubbing back and forth so it rolls along your fingers.
7. Taming your eyebrows can instantly enhance any look, even with minimal makeup. After shaping brows, use the Mary Kay® Eyeliner/Eyebrow Brush from the Mary Kay® Brush Collection to fill in eyebrows with Mary Kay® Mineral Eye Color in Hazelnut – a shade that flatters most faces.

MODEL NAME _____

OCCUPATION _____

PHONE _____ HOME
_____ WORK
_____ CELL

BEST TIME TO CALL _____

Email _____

HAIR COLOR _____

EYE COLOR _____

SKIN TYPE: combination - oily - dry

Before

3" X 5" works best

After

3" X 5" works best

Color Harmony

Bring out natural beauty with a harmonious blend of creamy neutrals and pinks and just a hint of vibrant color for artistic expression.

1. Sweep Honey Spice mineral eye color across the eyelid to the crease. Then apply Crystalline mineral eye color from the crease to the brow bone and blend.
2. Use Deep Brown eyeliner along top lashline and half way along bottom lashline starting at the outer corner. Then smudge Iris mineral eye color along the upper and lower lashline with the Eyeliner/Eyebrow Brush from the Mary Kay® Brush Collection.
3. Apply Mary Kay® Ultimate Mascara™ in Black to the top and bottom lashes.
4. Create a rosy cheek with Mary Kay® Mineral Cheek Color in Pink Petals.
5. Layering pink shades on lips creates a full, natural-looking lip. Line the lips in Dusty Pink lip liner, then apply lipstick in Dusty Rose and lip gloss in Melon Sorbet.

MODEL NAME _____

OCCUPATION _____

PHONE _____ HOME
_____ WORK
_____ CELL

BEST TIME TO CALL _____

Email _____

HAIR COLOR _____

EYE COLOR _____

SKIN TYPE: combination - oily - dry

Before

3" X 5" works best

After

3" X 5" works best

Day Dewey

Try this fresh-faced daytime look that's quick and easy with just five products.

1. Start off by applying Mary Kay® Tinted Moisturizer With Sunscreen SPF 20* to achieve a fresh, dewy complexion.
2. Next, give eyes a warm glow with a soft wash of Silky Caramel mineral eye color.
3. Then apply Olive eyeliner and smudge with the Eyeliner/Eyebrow Brush from the Mary Kay® Brush Collection or an eye sponge.
4. Finish your glowing look with a coat of Mary Kay® Waterproof Mascara and a swipe of Gold Rush lip gloss.
5. To quickly change this look from daytime to nighttime, add a sweep of your favorite cheek color and a swipe of lipstick in a deeper shade. Gold Rush lip gloss looks fabulous over any lipstick shade.
6. For longer, thicker-looking lashes, layer mascara in two to three thin coats. Allow mascara to thoroughly dry between coats.

MODEL NAME _____

OCCUPATION _____

PHONE _____ HOME
_____ WORK
_____ CELL

BEST TIME TO CALL _____

Email _____

HAIR COLOR _____

EYE COLOR _____

SKIN TYPE: combination - oily - dry

Before

3" X 5" works best

After

3" X 5" works best

Effortless Elegance

Looking elegant is easy with a look that's all about the eyes.

1. Apply Black eyeliner to upper and lower lashlines.
2. Blend Navy Blue mineral eye color along top lashline and onto half of the upper eyelid. Then apply along lower lashline.
3. Starting at the edge of where you applied Navy Blue mineral eye color, blend Steel mineral eye color up onto eyelid, into the eye crease and onto the brow bone.
4. Swipe Silky Caramel mineral eye color just under arch of the brow and blend onto brow bone.
5. Apply Mary Kay® Ultimate Mascara™ in Black on top and bottom lashes.
6. Sweep on Shy Blush mineral cheek color.
7. Line lips with Neutral lip liner all over lips then apply Mary Kay® Creme Lipstick in Sweet Nectar.
8. Apply lip gloss to the very center of your lips to make them appear fuller. For this look, try Mary Kay® NouriShine® Lip Gloss in Starry.
9. For thicker-looking lashes, apply Mary Kay® Ultimate Mascara™ horizontally at roots, working wand in an upward, side-to-side "sawing" motion.

MODEL NAME _____

OCCUPATION _____

PHONE _____ HOME
_____ WORK
_____ CELL

BEST TIME TO CALL _____

Email _____

HAIR COLOR _____

EYE COLOR _____

SKIN TYPE: combination - oily - dry

Before

3" X 5" works best

After

3" X 5" works best

Luminous Finish

For a gorgeous glow, this simple look definitely delivers with a handful of products.

1. Give cheekbones the focus by highlighting them with three to four dots of Mary Kay® Facial Highlighting Pen along the top of each cheek. Blend in gently with fingertips.
2. Lightly dust Mary Kay® Mineral Highlighting Powder in Pink Porcelain across the top of cheekbones.
3. Apply Shy Blush mineral cheek color on the apples of the cheeks and blend well.
4. Apply Mary Kay® Ultimate Mascara™ in Black to the upper and lower lashes.
5. Finish off with a swipe of Mary Kay® Tinted Lip Balm Sunscreen SPF 15* in Rose.
6. Use your Mary Kay® Mineral Highlighting Powder to brighten eyes. Apply the pink powder on eyelids and the white powder on the brow bone and inner eye.
7. When applying two or more coats of mascara, combing through lashes between coats can help give lashes a fuller, thicker look. Try the Mary Kay® Eyeliner/Eyebrow Brush from the Mary Kay® Brush Collection.

MODEL NAME _____

OCCUPATION _____

PHONE _____ HOME
_____ WORK
_____ CELL

BEST TIME TO CALL _____

Email _____

HAIR COLOR _____

EYE COLOR _____

SKIN TYPE: combination - oily - dry

Before

3" X 5" works best

After

3" X 5" works best

Silk and Satin

This glowing look is inspired by the warm colors from sandy beaches and the beautiful wash of lavender and purple from a summer sunset.

1. Apply Black eyeliner to upper and lower lashlines.
2. Apply Silky Caramel mineral eye color all over eyelid, from lashline to brow bone.
3. Then starting at the outer corner of the eye, apply Iris mineral eye color into the crease. Blend it halfway across the eyelid. Then smudge it along the lower lashline with the Eyeliner/Eyebrow Brush from the Mary Kay® Brush Collection.
4. Apply Steel mineral eye color just along the upper lashline with the Eyeliner/Eyebrow Brush.
5. Apply Mary Kay® Ultimate Mascara™ to top and bottom lashes.
6. Apply Pink Petals mineral cheek color to the apples of the cheeks.
7. Line lips with Neutral lip liner and apply all over lips. Then apply Mary Kay® Creme Lipstick in Apricot Glaze. Finish with Cream & Sugar lip gloss.

MODEL NAME _____

OCCUPATION _____

PHONE _____ HOME
_____ WORK
_____ CELL

BEST TIME TO CALL _____

Email _____

HAIR COLOR _____

EYE COLOR _____

SKIN TYPE: combination - oily - dry

Before

3" X 5" works best

After

3" X 5" works best

Subtly Smoky

Pairing a sultry eye look with bright lips is an easy way to put together a show-stopping look.

1. Apply Black eyeliner to upper and lower lashlines.
2. Apply Crystalline mineral eye color from brow bone to eye crease.
3. Wash Hazelnut mineral eye color from just above the crease to the lashline and into the inner and outer corners of the eyelid.
4. With the Eyeliner/Eyebrow Brush from the Mary Kay® Brush Collection, apply Granite mineral eye color along the upper lashline and blend up onto the lid to give the illusion of a smoky eye.
5. Apply Mary Kay® Ultimate Mascara™ in Black on top and bottom lashes.
6. Sweep on Sparkling Cider mineral cheek color.
7. Line lips with Raspberry lip liner all over lips then apply the new Beauty That Counts™ Mary Kay® Creme Lipstick in limited-edition Pink Passion. Finish with Pink Diamonds lip gloss.

MODEL NAME _____

OCCUPATION _____

PHONE _____ HOME
_____ WORK
_____ CELL

BEST TIME TO CALL _____

Email _____

HAIR COLOR _____

EYE COLOR _____

SKIN TYPE: combination - oily - dry

Before

3" X 5" works best

After

3" X 5" works best

Sweet and Simple

For something soft and subtle, try this variation of pinks and neutrals to bring a fresh youthfulness to any skin tone.

1. Apply Navy eyeliner to upper lashline.
2. Wash the entire eyelid in Sweet Pink mineral eye color, from lashline to brow bone and to the inner eye.
3. Sweep Precious Pink mineral eye color from lashline to eye crease.
4. Then smudge Granite mineral eye color over Navy eyeliner using the Eyeliner/Eyebrow Brush from the Mary Kay® Brush Collection.
5. Apply one or two coats of Mary Kay® Ultimate Mascara™ in Black on top and bottom lashes.
6. Sweep on Sparkling Cider mineral cheek color just to the apples of your cheeks for a natural glow.
7. Glide on some Mary Kay® Tinted Lip Balm Sunscreen SPF 15* in Apricot.
8. For more subdued drama, forgo the eyeliner and apply only Granite mineral eye color along upper and lower lashlines with the Eyeliner/Eyebrow Brush from the Mary Kay® Brush Collection.
9. For a twist on smoky eyes, experiment with colors other than black. For this look, try blending Granite mineral eye color from lashline to eye crease.

MODEL NAME _____

OCCUPATION _____

PHONE _____ HOME
_____ WORK
_____ CELL

BEST TIME TO CALL _____

Email _____

HAIR COLOR _____

EYE COLOR _____

SKIN TYPE: combination - oily - dry

Before

3" X 5" works best

After

3" X 5" works best

Two-Minute Look

Three products are all you need to get glowing in minutes.

1. Apply Mary Kay® Mineral Bronzing Powder along the cheek bones and eyes. Use the darker shade along the lower cheekbones and across the eyelid. Use the lighter shade along the top of the cheekbone and across the brow bone.
2. Apply one or two coats of any Mary Kay® mascara on top and bottom lashes.
3. Protect, moisturize and color lips with the ultimate multitasker – Mary Kay® Tinted Lip Balm Sunscreen SPF 15*.
4. If you have an extra minute, apply the Mary Kay® Eyesicles® Eye Color in Island Bronze on eyes before applying bronzing powder over it.
5. Dust bronzer all over face and décolleté for an all-over glow. It's easy with the Powder Brush in the Mary Kay® Brush Collection.

MODEL NAME _____

OCCUPATION _____

PHONE _____ HOME
_____ WORK
_____ CELL

BEST TIME TO CALL _____

Email _____

HAIR COLOR _____

EYE COLOR _____

SKIN TYPE: combination - oily - dry